

TAKEUCHI
Those in the know, know Takeuchi

TB1140 Series 2 Compact Excavator



TB210R



TB216



TB230



TB240



TB260



TB280FR



TB290



TB1140 SERIES 2

Product Features & Specifications

ENGINE

- EPA Interim Tier 4 Compliant
- Turbocharged with Intercooler
- DOC+DPF Exhaust After Treatment
- Automatic Fuel Bleed System
- Dual Element Air Filter
- High Pressure Common Rail Fuel Injection
- Automatic Idle
- Working Modes: Power, Eco, and High Altitude
- Automatic Preheat
- High Capacity Radiator
- High Capacity Fuel Filters

ELECTRICAL

- Multi-Informational Display
- Sealed Rocker Switches
- 24 volt System with 50 amp Alternator
- 12 volt outlet
- Hour Meter
- Halogen Work Lights: Boom and Side Cover
- Travel Alarm
- Horn

UNDERCARRIAGE AND FRAME

- Triple Flanged Track Rollers
- 2-Speed Travel with Automatic Shift
- High Torque Planetary Final Drive
- Heavy Duty Dozer Blade with Float
- Wrap Around Counterweight
- 20" Rubber Tracks
- 24" Steel Tracks (optional)
- 20" Segmented Rubber Tracks (optional)

OPERATOR'S STATION

- Cab with Air Conditioner, Heat Defrost, Windshield Wiper and Washer, Skylight with Sunshade, AM / FM / MP3 Radio, 12v Power Outlet
- ROPS / TOPS / FOPS Level 2 Protection
- Deluxe High Back Air Ride Suspension Seat with Heat
- Adjustable Arm Rests
- 2" Retractable Seat Belt
- 3" Retractable Seat Belt (optional)
- Front Window Guard (optional)

HYDRAULIC & WORKING EQUIPMENT

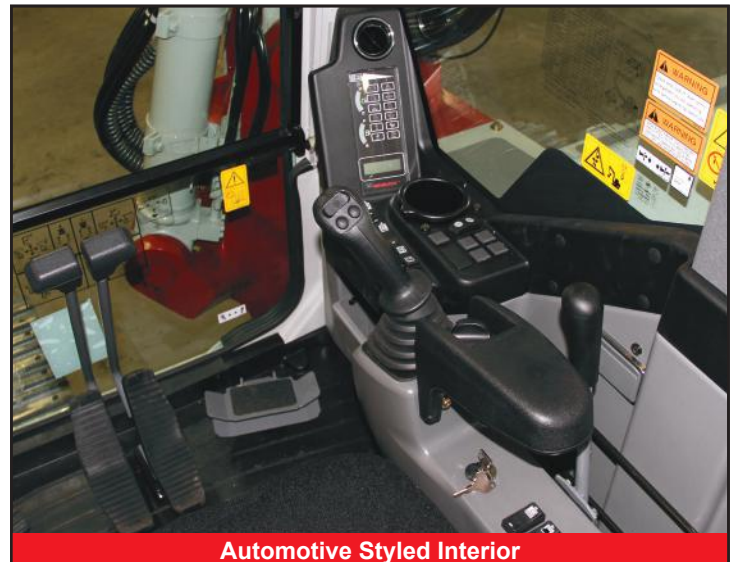
- Variable Displacement, Open Center Hydraulics
- Independent Boom Swing
- Cushioned Boom and Arm Cylinders
- Hydraulic Pilot Controls
- Proportional Auxiliary Controls with Detent
- Adjustable Auxiliary Flow
- Dual Boom Cylinders
- Primary and Secondary Auxiliary Hydraulic Circuit Plumbed to Arm
- High Pressure Third Auxiliary Circuit
- Multiple Attachment Presets
- Flow Selector Valve, Primary Auxiliary Circuit
- Pattern Change Valve (ISO or SAE)
- High Capacity Hydraulic Oil Cooler
- Pilot Accumulator
- Long Arm
- Arm and Boom Holding Valve with Lift Alarm
- Pin Grabber Bucket Coupler (optional)
- Main Pin Hydraulic Thumb (optional)

TAKEUCHI FLEET MANAGEMENT

- 2 Year Standard Service
- Minimize Downtime
- Remote Diagnostics
- Utilization Tracking
- Proactive Maintenance
- Control Costs



Pivot Boom and Backfill Blade



Automotive Styled Interior

TOUGH, POWERFUL, RELIABLE



Large Floor with Foot Rest



Wraparound Counterweight



Triple Flanged Track Rollers



Work Lights

With the versatility of a compact excavator, the TB1140 Series 2 features a backfill blade with float function and a pivot boom making it rather unique among machines in this class. While having characteristics of a compact excavator the TB1140 Series 2 delivers an outstanding blend of power and performance lending itself to a wide range of applications from large utility installations, to bridge and road work, general construction, demolition, and landscaping. The impressive feature set on

the TB1140 Series 2 includes a first, second, and third auxiliary hydraulic circuits making it the ideal attachment platform. Three track options from rubber, wide triple grouser steel track, and road liner track pads ensure the customer can choose a track system that best fits their application. Boom and arm holding valves ensure the work equipment will not experience a sudden drop in the event of an unexpected loss of pressure, while the overload alarm alerts the operator when the excavator is reaching its hydraulic capacity.



Large lockable service hood provide vandalism protection and outstanding maintenance access.

OPERATING PERFORMANCE

Operating Weight - Cab (Rubber)	34,116 lb	(15,475 kg)
Cab (Steel)	34,700 lb	(15,740 kg)
Maximum Bucket Breakout Force	22,188 lb	(10,064 kg)
Maximum Arm Digging Force	12,634 lb	(5,730 kg)
Arm Length	8 ft 5.0 in	(2,750 mm)
Slew Speed	13.4 rpm	
Traction Force	32,555 lb	(14,767 kg)
Ground Pressure - Cab (Rubber)	6.57 psi	(45.3 kPa)
Cab (Steel)	6.80 psi	(46.9 kPa)
Max Travel Speed		
Low Range	1.9 mph	(3.0 km / hr)
High Range	3.3 mph	(5.3 km / hr)

ENGINE

Make / Model	Isuzu / AM-4JJ1X
Displacement	183.0 cu in (3.0 L)
Horsepower @ 2,000 rpm	103.3 hp (77.0 kW)
Maximum Torque @ 1,600 rpm	284 ft-lb (385.0 Nm)

FLUID CAPACITIES

Engine Lubrication	18.0 qt	(17.0 L)
Cooling System	19.5 qt	(18.5 L)
Fuel Tank Capacity	61.5 gal	(233.0 L)
Fuel Consumption (65% of Full Load)	3.32 gal / hr	(12.6 L / hr)
Hydraulic Reservoir Capacity	25.1 gal	(95.0 L)
Hydraulic System Capacity	56.8 gal	(215.0 L)

HYDRAULIC SYSTEM

Total Hydraulic Flow	75.3 gpm	(285.0 Lpm)
Auxiliary Flow - Primary Circuit	59.0 gpm	(224.0 Lpm)
Auxiliary Flow - Secondary Circuit	14.5 gpm	(55.0 Lpm)
Hydraulic System Pressure	4,977 psi	(34.3 MPa)



LCD Display



High Capacity Radiator





Dozer Blade with Float



Multi-Function Switch Bank

TB1140 Series 2 Lifting Capacities at Ground Level*

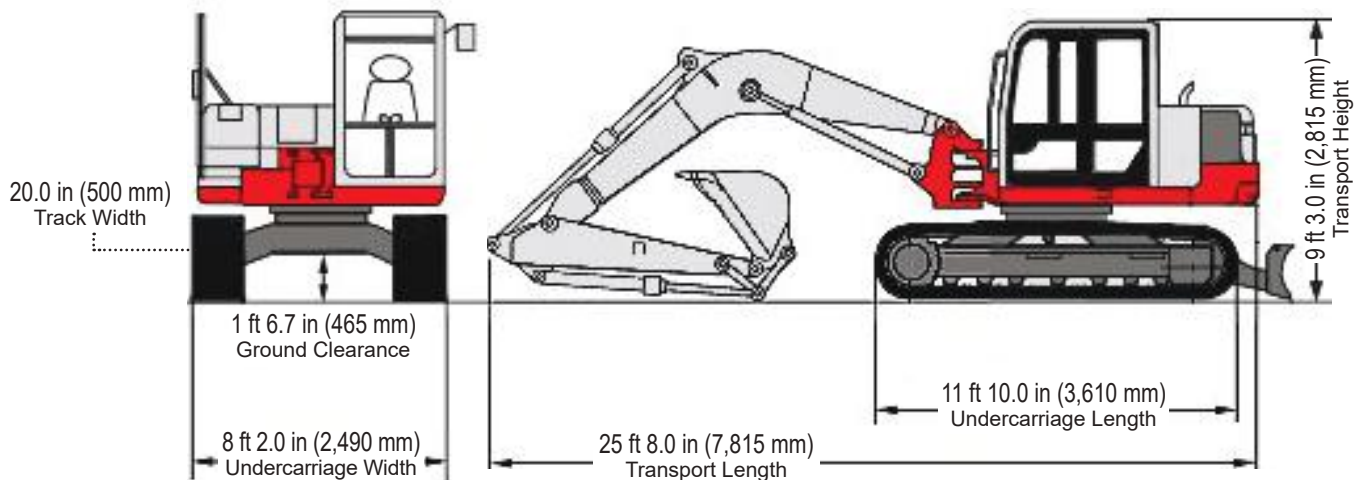
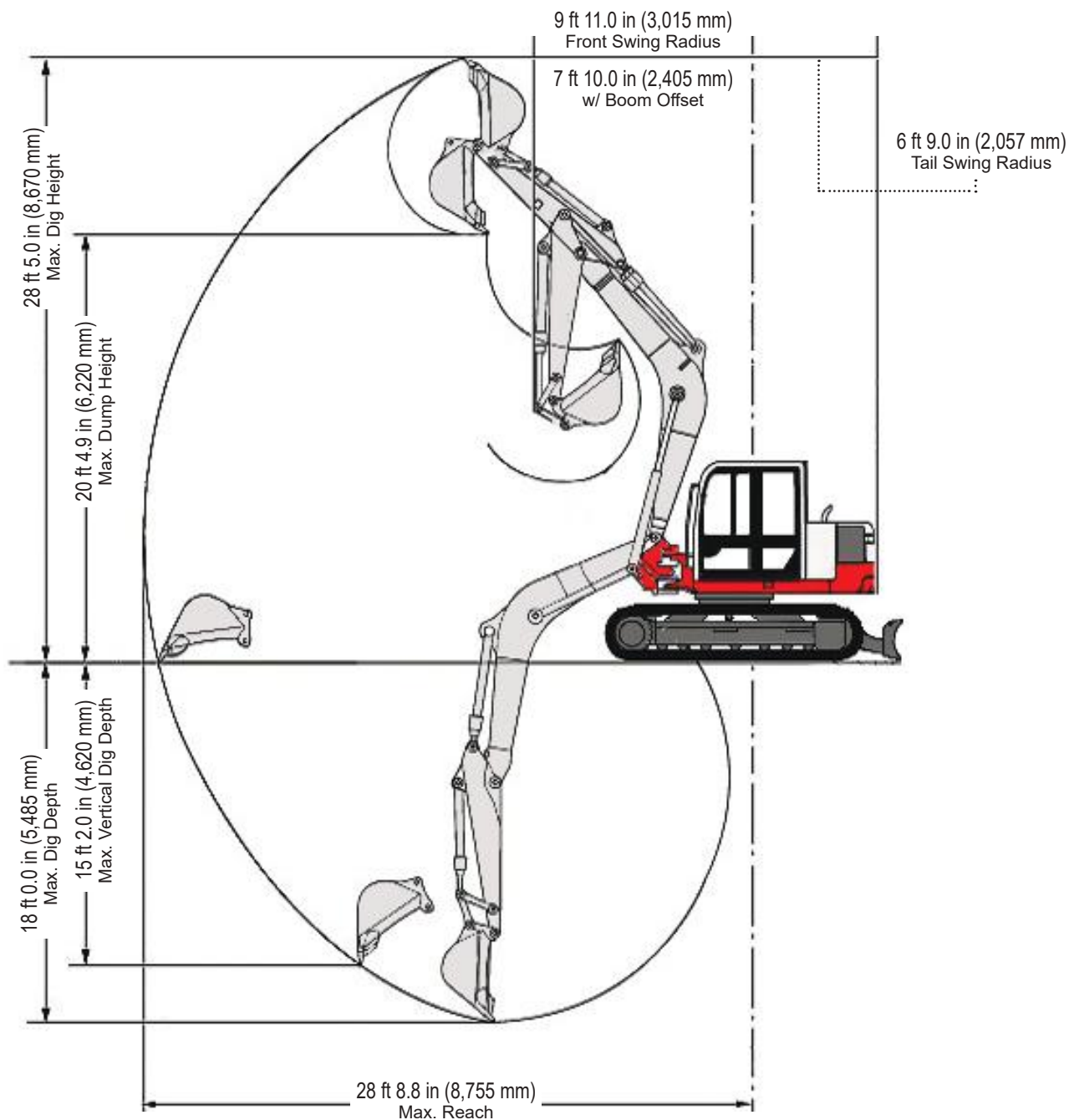
Lift Point Radius from Rotation Axis	12 ft (3,657 mm)	16 ft (4,876 mm)
 Lifting Capacities Over Front, Blade Down	17,131 lb (7,771 kg)	12,245 lb (5,554 kg)
 Lifting Capacities Over Side	10,278 lb (4,662 kg)	6,884 lb (3,123 kg)

* Ratings based on ISO10567 and do not exceed 87% of hydraulic lift or 75% of tipping load.

ATTACHMENTS

Takeuchi now offers attachments for all of your Takeuchi equipment. See your authorized Takeuchi dealer for additional information and attachment options.

TB1140 Series 2 Compact Excavator





2 YEAR
2,000 HOUR
FULL MACHINE
WARRANTY



© 2016 Takeuchi Manufacturing (U.S.), Ltd. All Rights Reserved. Printed in the U.S.A.
In accordance with our established policy of continued improvement, specifications and features are subject to change without notice. Pictures may show options other than standard equipment.
FORM: TB1140Series2 Compact Excavator Spec Sheet July 2016 - (TFM) s/n 514400603 ~

TAKEUCHI
Those in the know, know Takeuchi